



Community Profile for Lawrence, IN

Sandi Cook

Email: sandi.cook@talktotucker.com
Phone: (317) 292-8392

F.C. Tucker Company, Inc.
REALTORS® since 1918

Community Information

COMMUNITY CHARACTERISTICS

These distinctive characteristics represent factors which have a strong influence on this community. Factors are considered "distinctive" if this community falls into the top 25% for these characteristics nationally.

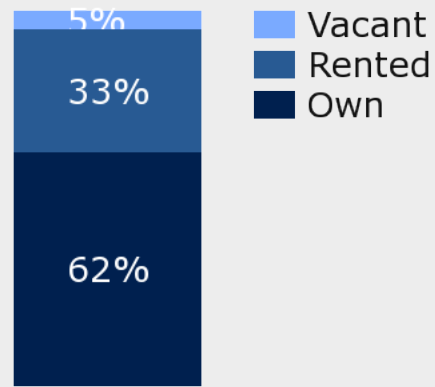
COMMUNITY SUMMARY

Population Growth (since 2000)	21
Population Density (ppl / mile)	2331
Average Household Size (ppl)	2.5
Households w/ Children	39%

Housing Stability

Annual Residential Turnover	23%
5+ Years in Residency	31%
Median Year in Residency	3%

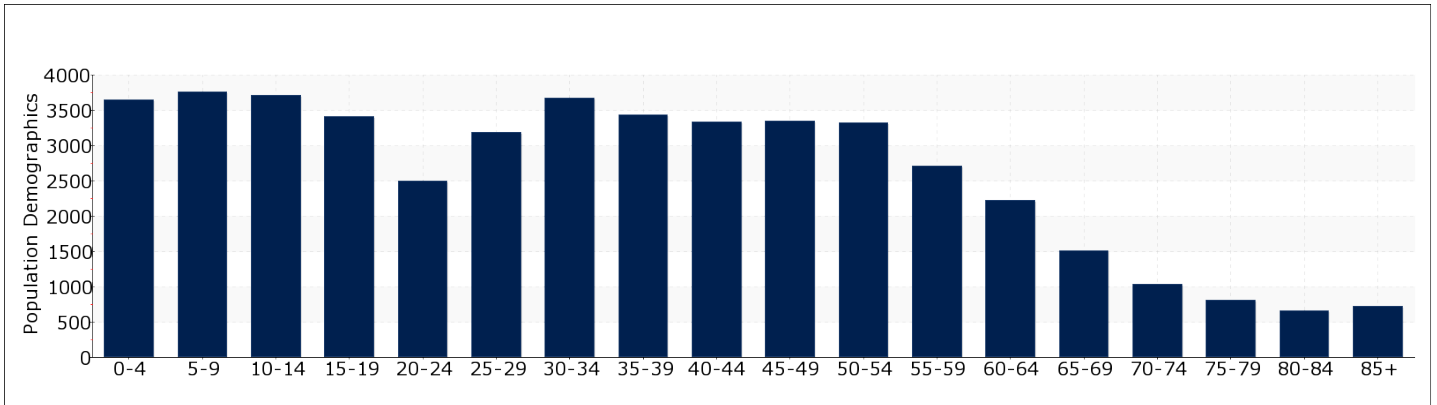
HOUSING INVENTORY



Percent Of Residential Dwellings

POPULATION DEMOGRAPHICS

The population of the community broken down by age group. The numbers at the top of each bar indicate the number of people in the age bracket below



Total: 46928

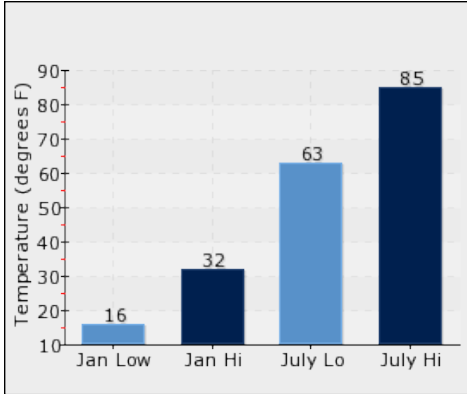
Households: 18345

Median Age: 33

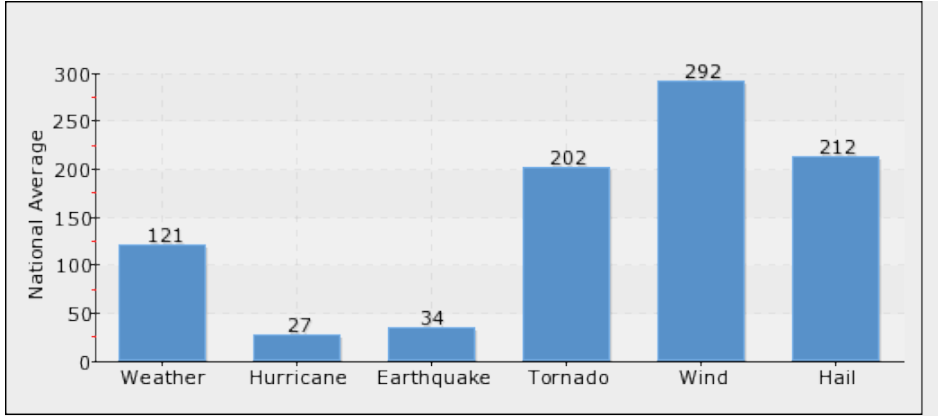
→ CLIMATE AND WEATHER

The average high and low temperature chart below serves as a useful measure of climate. Weather Risk suggests the risk of certain weather events occurring in this community as compared to the national average. The national average for each type of event equals a score of 100, so a score of 200 would represent twice the risk as the national average, and a score of 50 would represent half the risk of the national average.

→ TEMPERATURE(F°)



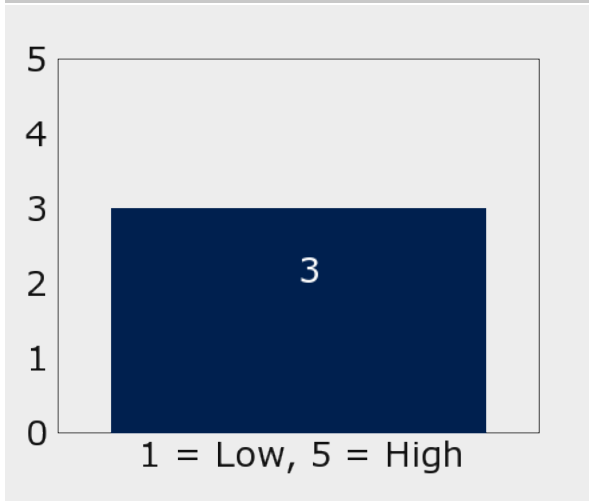
→ WEATHER RISK



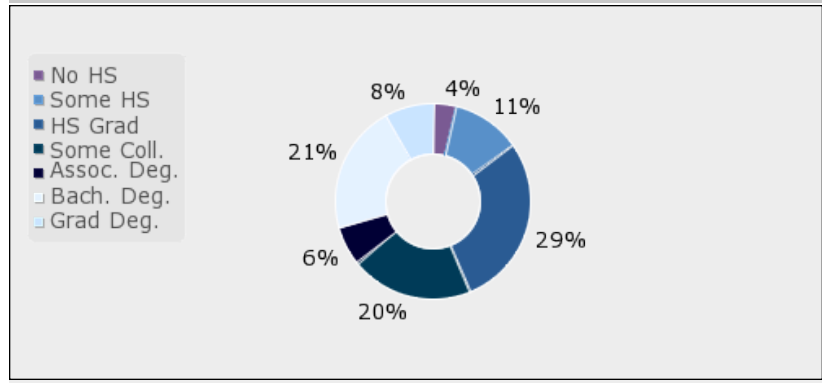
→ EDUCATION

The Community Educational Climate is a measure used to identify communities that are likely to have high quality schools by analyzing the social and economic conditions that are most likely lead to quality schools. Since this measure is based on the population of an entire community, it may not reflect the nature of an individual school.

→ EDUCATIONAL CLIMATE INDEX

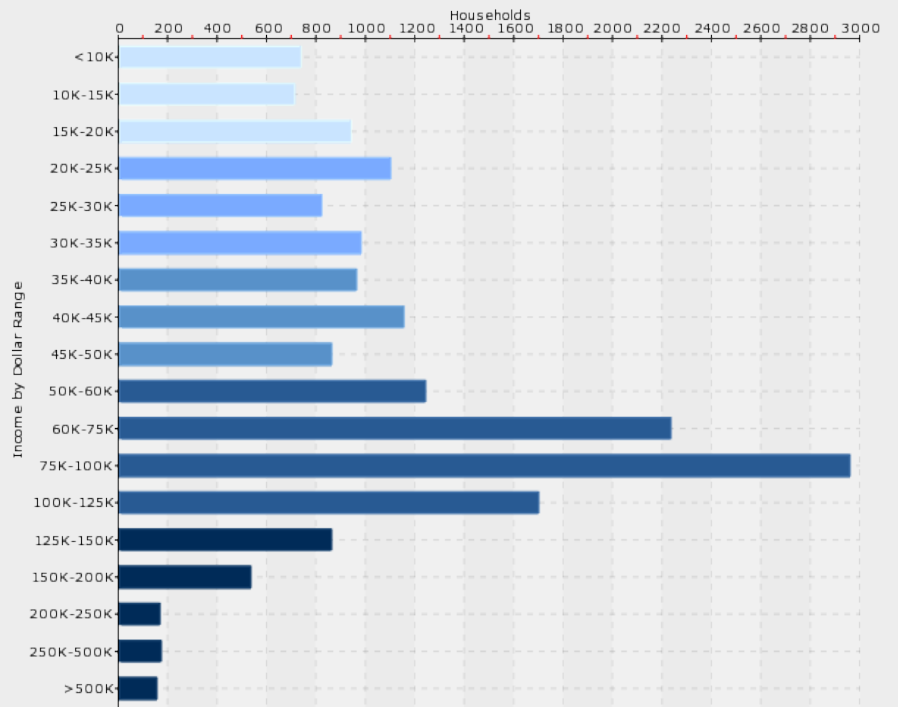
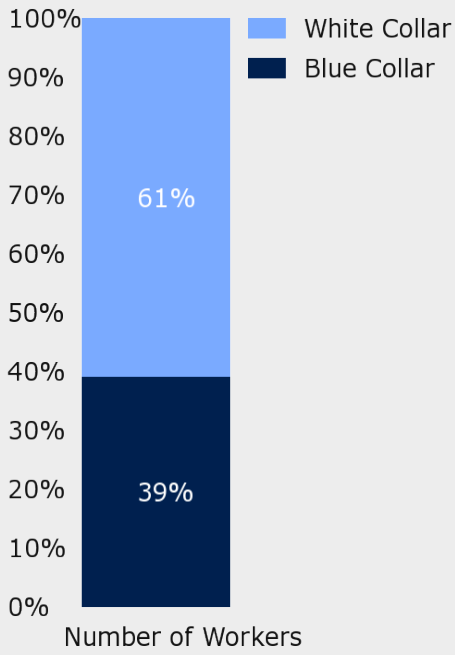


→ HIGHEST LEVEL ATTAINED



→ EMPLOYMENT & FINANCE

Workforce





School Information

No schools listed for this location.